

## Drake Neighborhood Architectural and Historical Survey:

1883-Queen Anne house, inset corner porch, irregular plan with shallow side wings, 26 feet by 30 feet core.



Figure 11-17: 1363 22<sup>nd</sup> Street

1895-Queen Anne style hip cube (24 feet by 30 feet) with shallow south/north wings, ornamented front gablet, offset dormer, Craftsman style gable front porch.

## Richardsonian Romanesque Style:

Apart from some Drake University campus examples, this style is not very much represented in surviving buildings within the survey area.



Figure 11-18: 2100 University Avenue/1154 21<sup>st</sup> Street

1887-Captain Nicholas W. and Emma Randolph Home, National Register of Historic Places listed, 1990.

## Spanish Revival:



Figure 11-19: 4005 Kingman Blvd.

Drake Neighborhood Architectural and Historical Survey:

1916 Spanish Revival style side gable cube plan, window bands, exotic offset front porch, east wing and walled patios, stucco, 32 feet by 27 feet.



Figure 11-20: 4051 Cottage Grove Avenue

Spanish Revival 1905 side gabled bungalow plan with elaborate wrap-around porch, dormer, 26 feet by 28 feet core.



Figure 11-21: 1209 41<sup>st</sup> Street

Spanish Revival cottage, stucco, narrow plan, 22 feet by 30 feet core.



Figure 11-22: 3500 Kingman Blvd.

1926 Spanish Revival style hip roof L-plan (29 feet by 39 feet overall) with added art gallery wing (19 feet by 42 feet), brick. Individually NRHP eligible?





Figure 11-23: 1717 38<sup>th</sup> Street

1928-Moderne/Spanish Revival stylistic combination, 31 feet by 35 feet core.

DES MOINES, IOWA, SUNDAY MORNING, MARCH 11, 1928.

**BUILD SPANISH DESIGN RESIDENCE HERE**

*An architect's drawing of the residence being built at 1721 Thirty-eighth street by George Goldsmith and R. Q. Selby is shown below. The home is of Spanish design. The living room is two stories. A balcony overlooks it. The living room connects with the dining room four steps below.*

An architectural drawing of a two-story Spanish-style residence. The house features a balcony on the second floor, arched windows, and a tiled roof. The drawing is framed by a decorative border.

THOMAS R. L. S. L. C. L. F.

Figure 11-24: New house at 1717 38<sup>th</sup> Street (Des Moines Register, March 11, 1928)



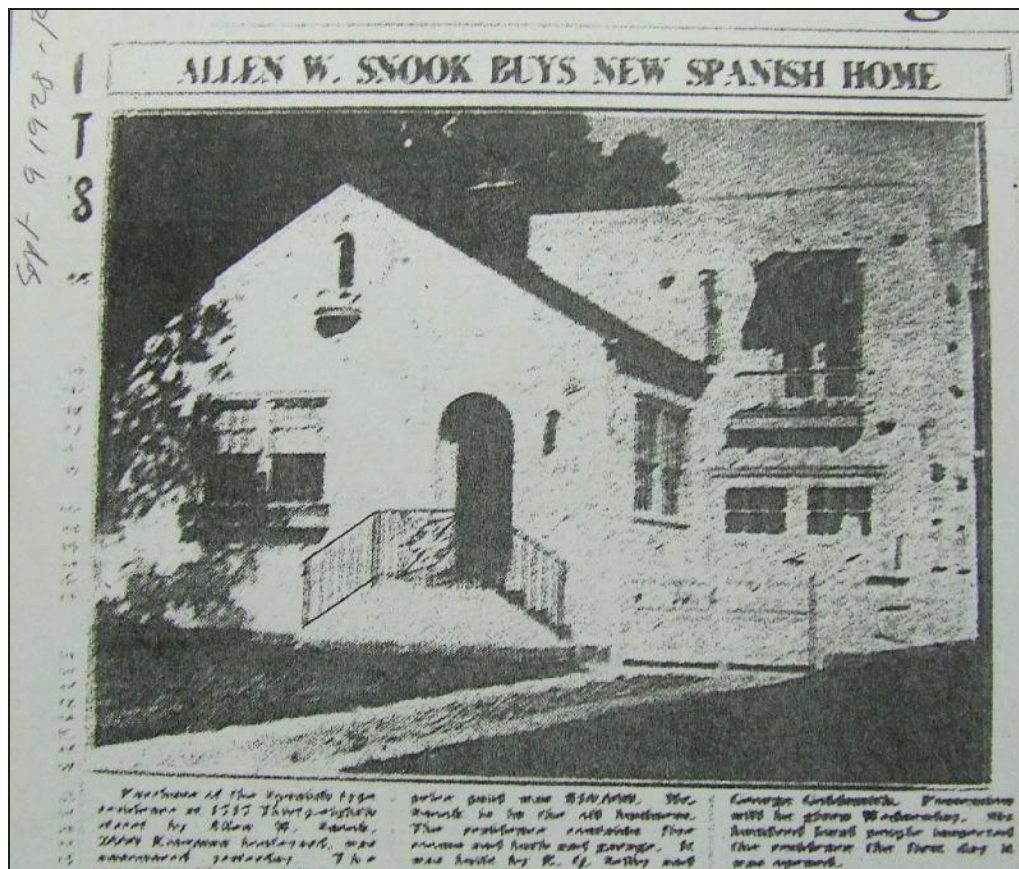


Figure 11-24: (Des Moines Register, September 9, 1928)

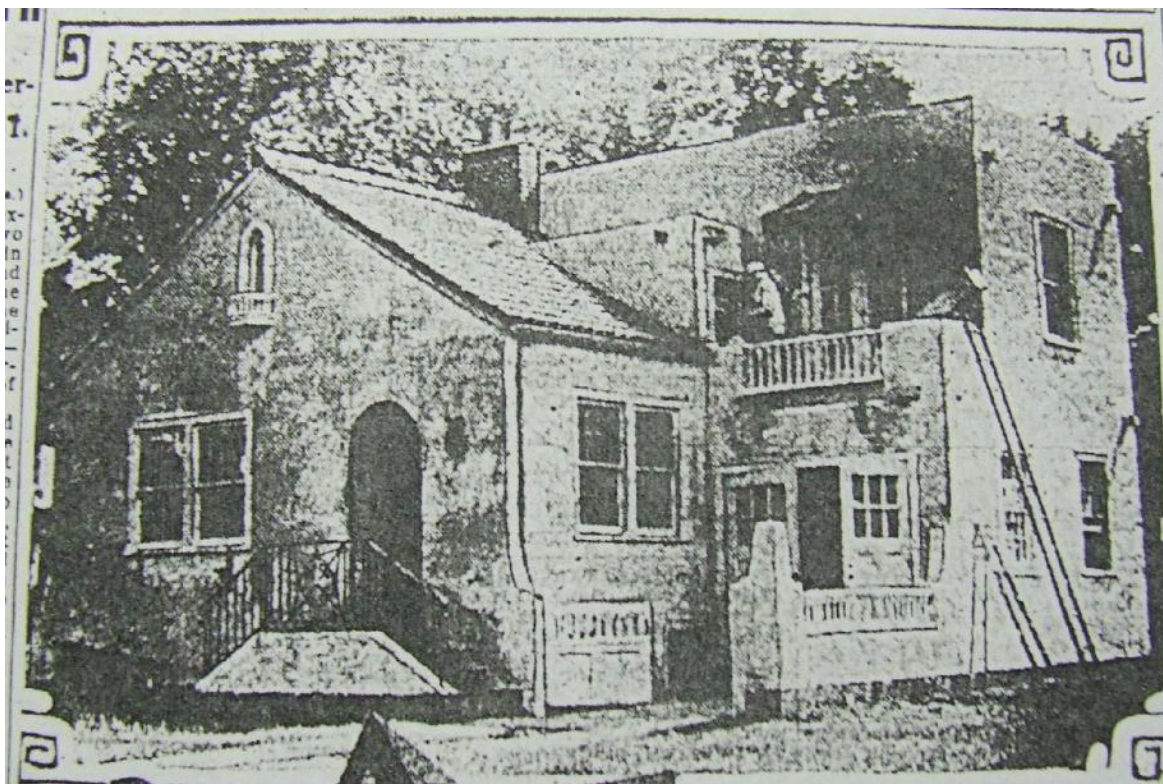


Figure 11-25: Nearly finished house (Des Moines Register, July 1, 1928)